



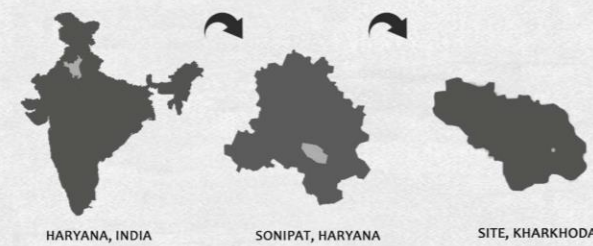
## Community Health Centre Kharkhoda, Haryana

- Site Area - 4529 sqm
- Achieved Ground Cov. - 30%
- Achieved Height - 10.8 metres
- Basements provided - none
- Equivalent Car Space - 1:50  
Parking for 25 cars

## About the project :

The Community Health Centres (CHCs) constitute the secondary level of health care, were designed to provide referral as well as specialist health care to the rural population. 4 PHCs are included under each CHC thus catering to approximately 80,000 populations in tribal/hilly/desert areas and 1,20,000 population for plain areas. CHC is a 30-bedded hospital providing specialist care in Medicine, Obstetrics and Gynecology, Surgery, Paediatrics, Dental and AYUSH. They are designed to provide optimal specialized care to the community and achieve and maintain an acceptable standard of quality of care.

## Site Location :

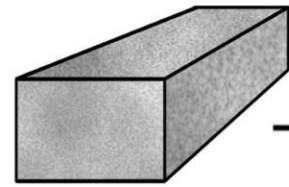


## User Profile :

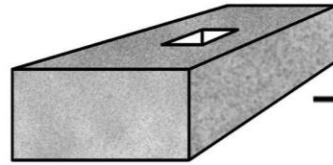
Community Health Centre is a place with a varied variety of users wanting to visit for various health care purposes. With the health centre providing all kinds of services, people from all the nearby villages will tend to visit the centre for getting checkups and some healthy emergency patients as well.



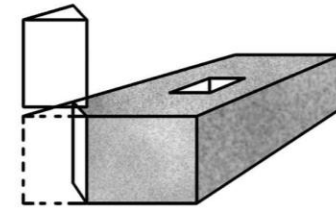
## FORM BASED CONCEPT DEVELOPMENT



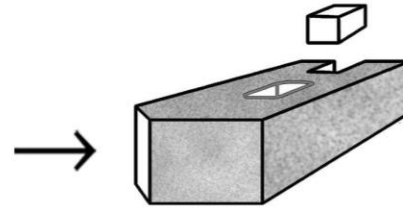
A basic rectangular block was taken on the site and solids and voids were cut from the block.



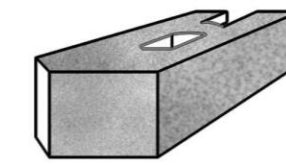
A COURTYARD was invented for wind circulation as well as for developing a safe environment for kids play zone.



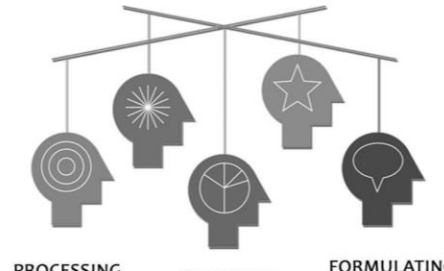
The North West face was TAPERED to make the emergency entrance prominent.



The courtyard was made ORGANIC in nature and a block was cut out to break the monotony of the building and provide space to develop canteen among the vicinity of the main block.



The backside of the building was played in curves to complement the organic courtyard.



PROCESSING ANALYSING FORMULATING  
The evolution of form was based on the balance of the pre design and design process. The basic design was a result of processing site information and case studies, analysing and hence then formulating the final design outcome into a good output.

## Scope Of The Design :

- Processing of site data
- Distributing information
- Analyzing the given data
- Dividing data in pointers
- Formulating the given data and presenting the information



## FINAL OUTCOME



SITE PLAN



The basic concept behind the distribution of the landscape and built on the site plan is to ensure quiet zones and noisy zones.

The side nearby the highway remains the noisiest, so does the entry area, hence the landscape and cafeteria areas as cut off from any vehicular movements and made complete silent zones for the patients and the doctors to relish as spaces.

The Vehicular movement is limited to the right side of the site with parking, service zone on that side. On the other side, Vehicular movement is towards areas where a lot of view can be enjoyed.

## SPECIAL ELEMENTS INCORPORATED IN THE DESIGN



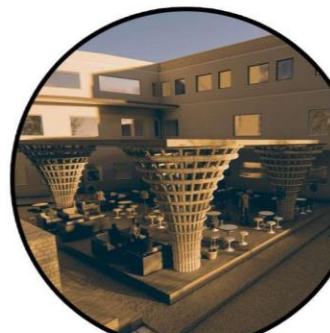
### COURTYARD

Courtyard is provided to provide wind circulation throughout the building and reducing the need of electricity.



### JALI

Jali is provided on the South side to help cool down the hot air entering inside the building.



### BAMBOO

Bamboo columns and roof in porch and columns as it is a sustainable material.



### RECESSED WINDOWS

Recessed windows are provided on the west side to minimize heat gains.



HUMAN BEINGS



NATURE/ LANDSCAPE



HEALTH



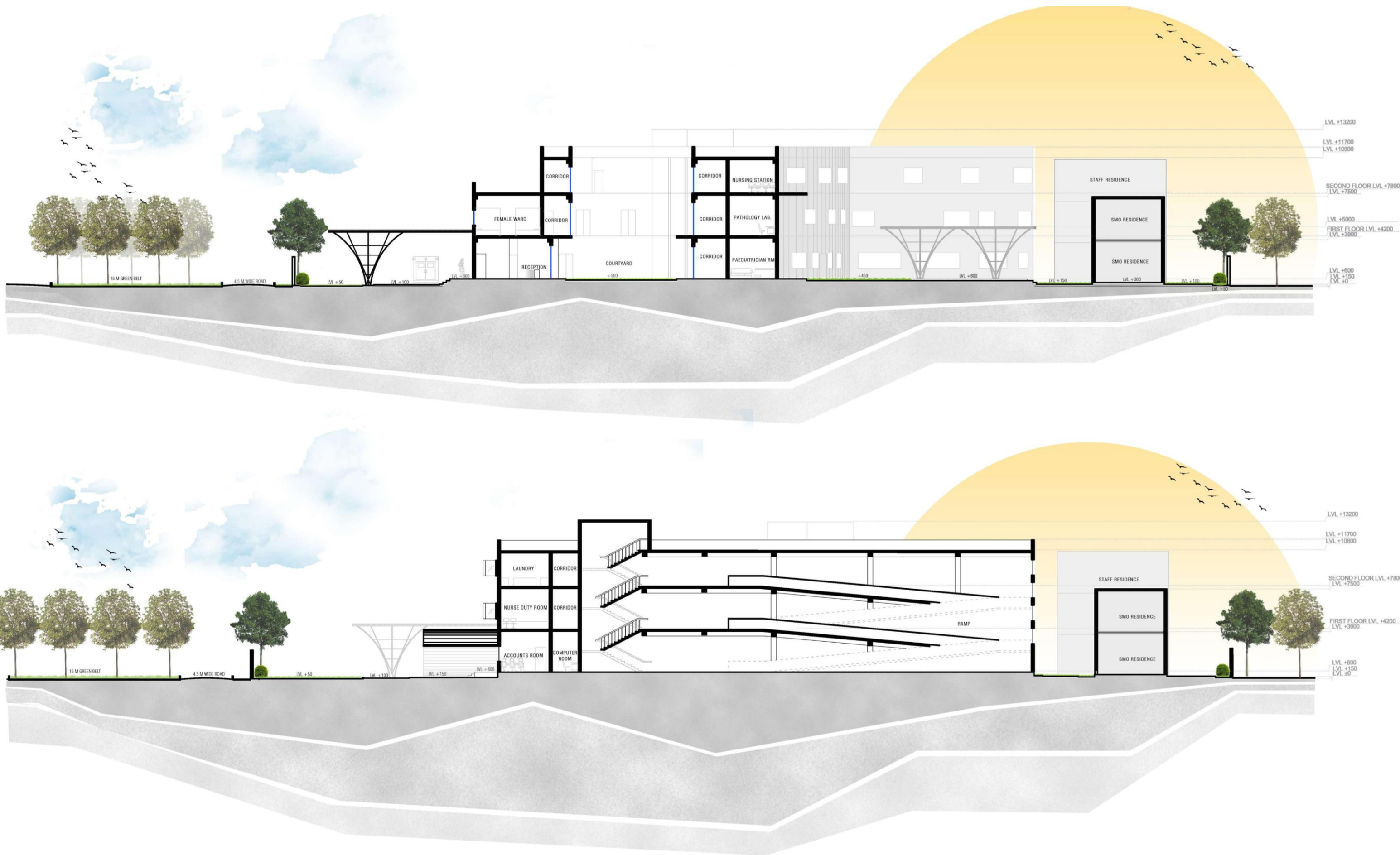
GROWTH

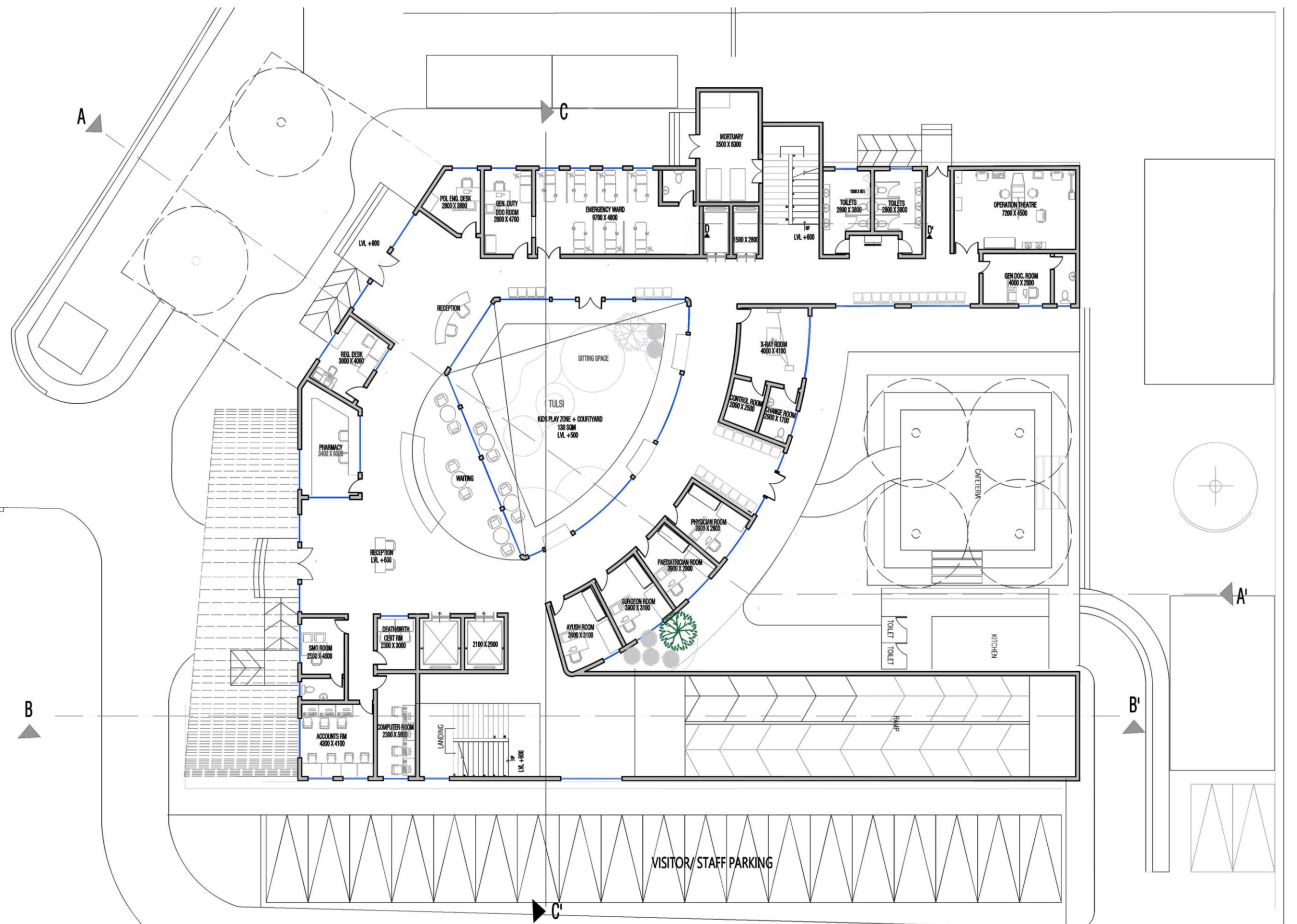
Another thing incorporated in the design is the use of nature and landscape. It is a known fact that landscape helps us grow and evolve, not only this, landscape helps us to heal and remain healthy. Hence, a clear and large space is provided for landscape area to be used by the doctors and visitors.















# 3D R E N D E R S





3D  
Renders





## 3D RENDERS

